

EDITOR HFe Series

HIGH FREQUENCY X-RAY GENERATORS

X-Ray Generators for Diagnostic Radiography

technical specifications



spellmanhv.com

EDITOR HFe for Radiography

EDITOR HFe Series

HIGH FREQUENCY X-RAY GENERATORS

- **Modular, back-plane design for simplified serviceability and support**
- **Isolated circuit breakers improve trouble shooting and increase safety: this gives service engineers the ability to power down specific sections of the generator as needed**
- **Extensive tube library: supporting most X-Ray tubes on the market**
- **Comprehensive PC service utility tool**

As the world's leading independent manufacturer of X-Ray generators and Monoblock[®] X-Ray sources, Spellman High Voltage is proud to offer the EDITOR HFe Series of high frequency diagnostic X-Ray generators.

Typical Applications

- General Radiography
- Digital Radiography
- Tomography
- Image Guided Radiation Therapy

EDITOR HFe Controller Options

Spellman EDITOR HFe X-Ray generators are available for either integrated and non-integrated X-Ray rooms.



Non-Integrated

EDITOR HFe full-featured membrane console available. *Consult factory regarding released DR interfaces



Integrated

Connect the EDITOR HFe DR Interface board to the integrated DR workstation, allowing simplified control of the generator techniques from the computer workstation, only using the EDITOR HFe Mini Console for POWER ON/OFF and PREP/EXPOSE buttons

Radiographic Options

- Interface for Automatic Exposure Control
- Interface for dose measuring devices and workstations offering integrated readouts
- High and Low Speed Starter
- Flexible cabinet options to meet your space requirements
- Input power options: 1Ø and 3Ø configurations available
- Output power options: 40kW, 50kW, 65kW, 80kW
- Windows based simplifies integration of the EDITOR HFe generator to any workstation



EDITOR HFe-1M Vertical Cabinet
(cover removed for clarity)

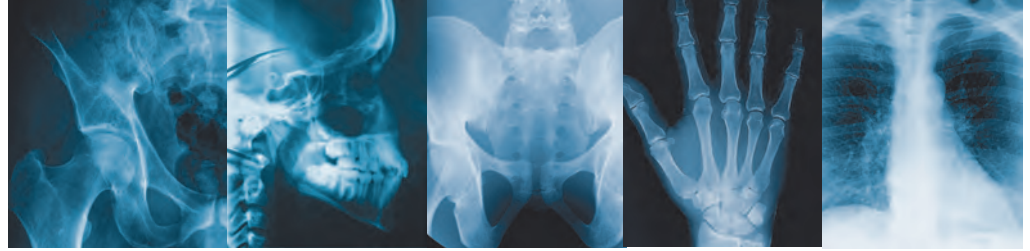


EDITOR HFe-S Compact Cabinet
(cover removed for clarity)



EDITOR HFe-UT Under Table Cabinet

SPECIFICATIONS



MODEL	EDITOR HFe 401	EDITOR HFe 501	EDITOR HFe 601	EDITOR HFe 801
Output Power	40kW	50kW	65kW	80kW
mA/kW @ 0, 1s				
@ 40kV	400 / 16	400 / 16	400 / 16	400 / 16
@ 60kV	500 / 30	650 / 39	800 / 48	800 / 48
@ 80kV	500 / 40	625 / 50	800 / 64	800 / 64
@ 100kV	400 / 40	500 / 50	650 / 65	800 / 80
@ 125kV	320 / 40	400 / 50	520 / 65	640 / 80
@ 150kV	266 / 40	330 / 50	430 / 65	530 / 80
Continuous falling load (with AEC)	Yes			
kV range for exposure	40-150kV			
Increments of	1kV			
or in (steps)	27 steps			
kV accuracy	±(5%+1kV)			
mA range for exposure	10-500 mA	10-650 mA	10-800 mA	10-800 mA
in	18 steps	19 steps	20 steps	20 steps
mA accuracy	±(6% +1mA) ±(10% +1mA for ms≤10ms)			
Max. mA @ max kV	500mA @ 80kV	650mA @ 76kV	800mA @ 81kV	800mA @ 100kV
ms range for exposure	1-6300 ms			
in	38 steps			
ms accuracy	±(4% +1ms) ±(10% +1ms for ms≤10ms)			
mAs range	0.5-600 mAs			
in	32 steps			
mAs range (optional)	0.5-1000 mAs			
in	34 steps			
mAs accuracy	±(10% +0, 2mAs)			
Automatic Exposure Control (AEC) interface	Optional			
AEC mAs range	0.5-600 mAs			
Interface for Air Kerma/Dose Area Product	Optional			
Printer and PC interface	RS-232			
High Speed Starter HSS1/HSS2	Optional			
Generator operating control console	Optional			
Digital integration without console	Ethernet and RS-232			

Available Input/Mains Configurations

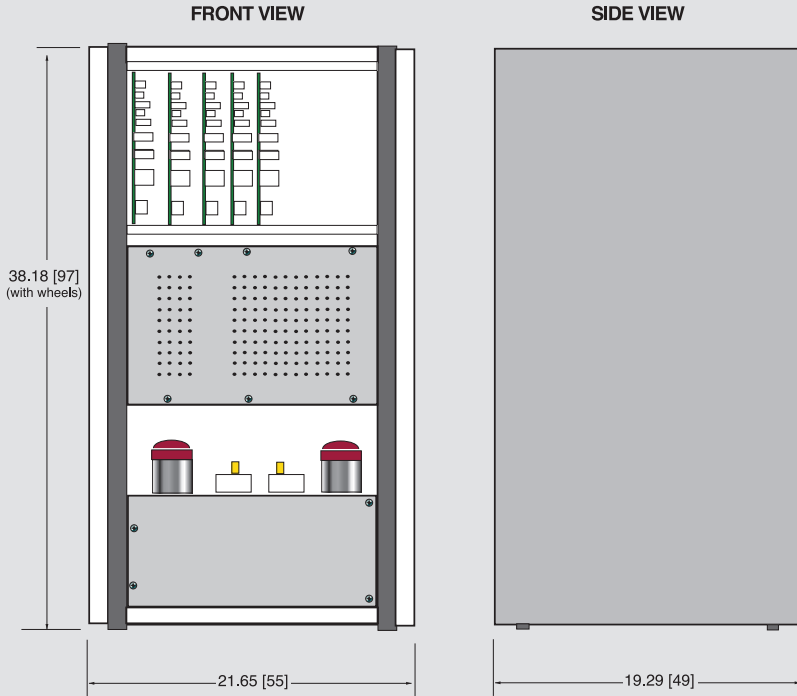
Generator Output Power	Input Power Options
40 kW (150KV, 500mA, 6300ms, 600mAs max.)	1Ø:208/230 VAC, 3Ø 208/230 VAC, 3Ø 400/480 VAC
50 kW (150KV, 650mA, 6300ms, 600mAs max.)	3Ø 400/480 VAC
65 kW (150KV, 800mA, 6300ms, 600mAs max.)	3Ø 400/480 VAC
80 kW (150KV, 1,000mA, 6300ms, 600mAs max.)	3Ø 400/480 VAC

Please consult factory regarding product configuration availability and regulatory requirements for specific markets



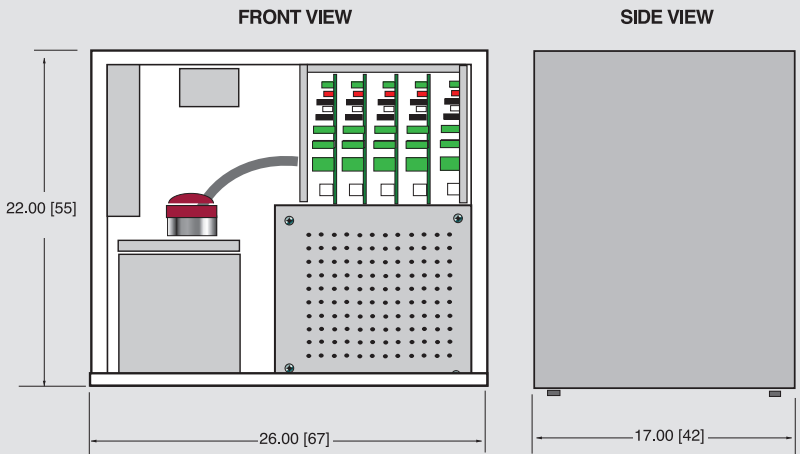
EDITOR HFe 401-801

STANDARD CABINET 266lbs (121kg)
DIMENSIONS: IN. (CM)



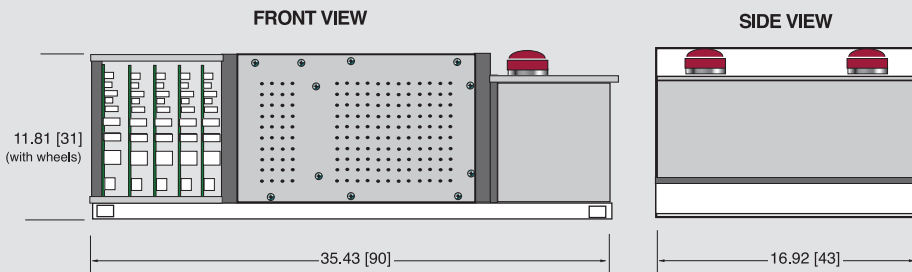
EDITOR HFe 401-801

S CABINET 165lbs (75kg)



EDITOR HFe 401-801

UNDER TABLE CABINET 165lbs (75kg)



Spellman USA and Corporate HQ

475 Wireless Blvd.
Hauppauge, NY 11788
United States
tel: +1-631-630-3000
fax: +1-631-435-1620
email: sales@spellmanhv.com

Spellman Valhalla NY USA

One Commerce Park
Valhalla, NY 10595
United States
tel: +1-914-686-3600
fax: +1-914-686-5424

Spellman UK

Broomers Hill Park #14, Broomers Hill
Pulborough, West Sussex,
United Kingdom RH20 2RY
tel: +44 (0) 1798 877000
fax: +44 (0) 1798 872479

Spellman Japan

4-3-1 Kamitoda,
Toda-shi, Saitama-ken,
Japan 335-0022
tel: +81 (0) 48-447-6535
fax: +81 (0) 48-445-7280

Spellman China

Spellman High Voltage Electronics (SIP) Co Ltd.
Block D, No.16 SuTong Road,
Suzhou Industrial Park 215021 China
tel: +(86)-512-69006010
fax: +(86)-512-67630030

Spellman High Voltage Korea Co.,Ltd.

#B-720, BRC Smart Valley,
Song Do Mirae-ro 30,
Yeonsu-Gu, Incheon, Korea 406-081
tel: +82-32-719-2300
fax: +82-32-720-4300

Spellman de Mexico – Plant 2

Avenida Pedregal # 2 Esquina
Avenida Chapultepec
Parque Industrial FINSA Oriente
Matamoros, Tamps., Mexico 87340
tel. +52 868 150-1200

Spellman de Mexico – Plant 3

Avenida Chapultepec # 101 Esquina
Avenida Horizonte
Parque Industrial FINSA Oriente
Matamoros, Tamps., Mexico 87340
tel. +52 868 150-1200

Spellman High Voltage GmbH

Josef-Baumann-Straße 23
44805 Bochum
Germany
tel: +49 (0) 234 87906-0
fax: +49 (0) 234 87906-11

 **Spellman**[®]
High Voltage Electronics Corporation
www.spellmanhv.com